

48/176

DRAWING NUMBER

DRAWING NUMBER

DRAWING NUMBER

PLAT NO. 3 WESTWOOD GARDENS

(A P.U.D.)

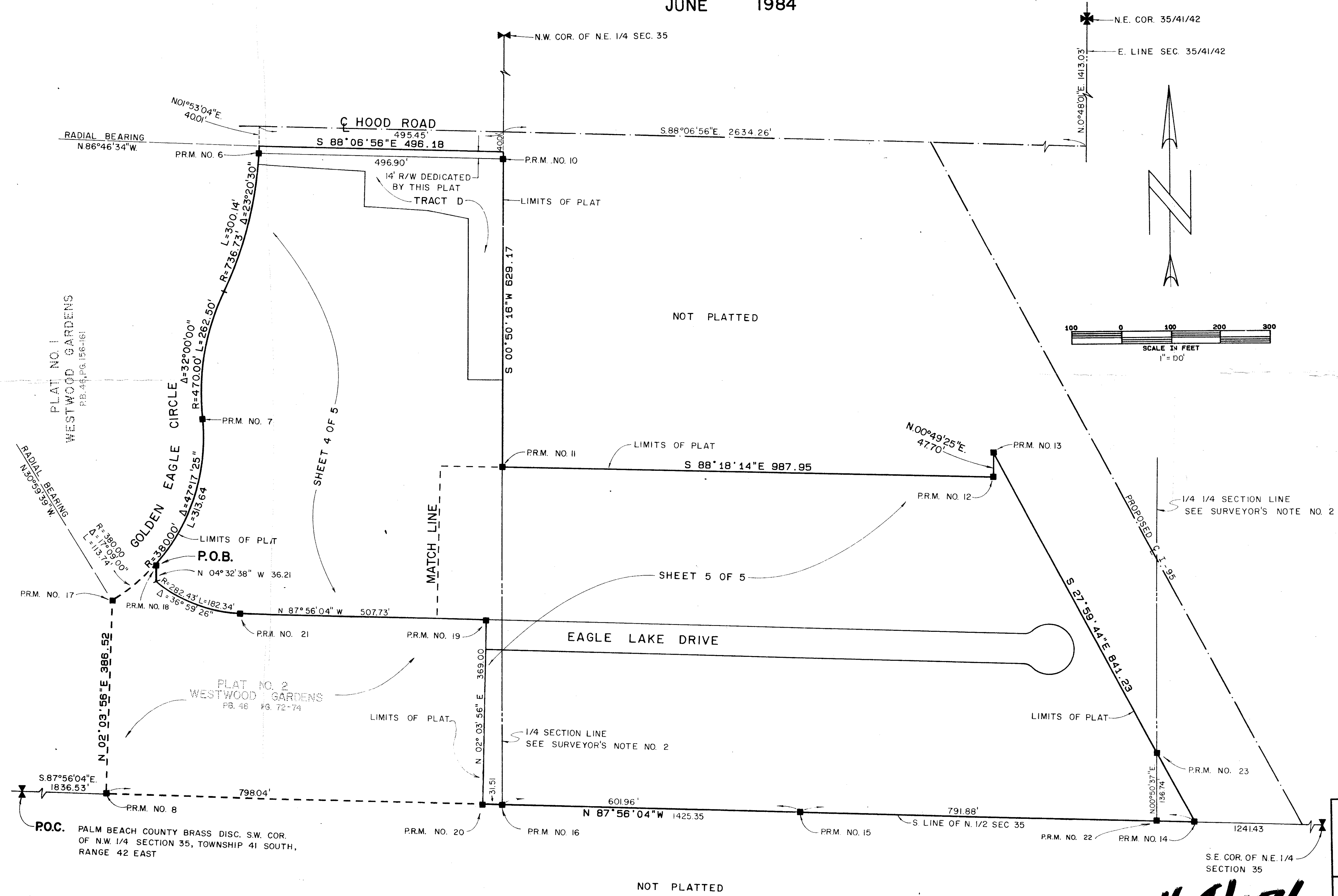
LYING IN SECTION 35, TOWNSHIP 41 SOUTH, RANGE 42 EAST

PALM BEACH COUNTY, FLORIDA

SHEET 3 OF 5

JUNE 1984

176



Handwritten notes:
 This instrument was prepared by
 William G. Wallace, Inc.
 Consulting Engineers and Land Surveyors
 9176 Alternate A1A
 Lake Park, Florida 33410

0379-003

THIS INSTRUMENT PREPARED BY:
 DENNIS J. MEIERER & GEORGE C. ZIGLIANI
 WILLIAM G. WALLACE, INC.
 CONSULTING ENGINEERS AND LAND SURVEYORS
 9176 ALTERNATE A1A
 LAKE PARK, FLORIDA 33410

**PLAT NO. 3
WESTWOOD GARDENS
(A P.U.D.)**

WILLIAM G. WALLACE, INC.
 CONSULTING ENGINEERS, LAND PLANNERS & SURVEYORS
 9176 ALTERNATE A1A LAKE PARK, FL. 33410 • 305-842-4233
 3241 SW MAMP RD. PALM CITY PLAZA, PALM CITY, FL. 33480 • 305-283-0209

FIELD:	J.H.	JOB NO.:	82-756	F.B.:	PG.
OFFICE:	R.M.R.	DATE:	JAN., 1984	DWG NO.:	82-756 "A"
CK'D:	D.J.M.	REF.:		SHEET:	3 OF 5

48/176